

Therapute

Therapy Management System for Long-Term Care

Therapute is a complete system for managing therapy in Long-Term Care. You can rely on Therapute to:

- Offer quick data entry for therapists
- Estimate RUG scores with minimum input
- Report on productivity, RUG status, revenue, and much more
- Bill all therapy payors
- Offer executive dashboards with drill-down and roll-up tools
- Integrate with Keane Care software for billing and demographics

Therapute uses treatment minutes entered by therapists for billing and real-time reporting of RUG categories, productivity, and financial data. Stay on top of outcomes with a customized dashboard that puts your key indicators at your fingertips.

Quick Data Entry for Therapists

Therapute was designed by therapists for efficient LTC charting. With Therapute, therapists begin their shifts with a worksheet that helps them plan their day, listing their patients and the therapy required. It's a grid that can be printed and used to record minutes and labor information.

At the end of the shift, therapists simply log in, select a resident, and enter minutes (see sample window at right) and any payroll/travel data. Click Finish and the data updates the central database. Therapute clients report that therapists usually spend 5 to 10 minutes per day on this data entry.

Ten minutes to enter a day's data

The screenshot shows a software window titled "DBR - Treatments" with tabs for "DTR - Labor" and "PTO". It displays patient information: "7/15/08", "Associate: CORINNA, CORINNA Physical Therapy", and "Patient: DONALD, DONALD". Below this is a table for data entry:

CPT	CPT Description	Minutes	Day Total	Modifiers
97010	Hot or Cold Packs		15	
97035	Ultrasound(ea15min)		0	
97110	Thera. Exercise(ea15min)		15	
97116	Gait Training(ea15min)		0	
97150	Therapeutic Proc-Group		15	
97530	Therapeutic Act(ea15min)		0	

At the end of the shift therapists enter their treatment minutes and labor data in this window. No services rendered? Choose a reason from the drop-down list. The window gives them total minutes for the day and a spot to enter any Part B modifiers, such as KX.

MDS 2.0 and RUG-III Tools for Optimum Payment

Therapute estimates RUG-III scores based on actual and on ordered therapy minutes and shows a comparison in the PPS Planner page to alert staff if they are not reaching the more appropriate RUG score. For a more precise calculation simply add ADL totals and whether the resident met the criteria for Extensive Services. The results are also shown in the PPS Plan report (sample on reverse).

At the Ultra High Rehab Plus Extensive Services RUG-III category, ADL scores can mean the difference between RUX and RUL and \$75 per day (2009 Medicare PPS rates). In the Very High Rehab category, if one ADL is missed between RVB and RVA, the difference is \$41 per day. The difference between RUC and RUA in the Ultra High Rehab category is 8 ADLs and \$66 per day.

Extensive Management Information

Therapute offers more than 200 on-demand reports with real-time data. The reports were designed with therapy managers in mind, focusing on treatment, clinical, outcomes, productivity and revenue. Many of the reports are tools to assure appropriate RUG coding, timely MDS assessments, efficient therapy cap tracking, cost-effective staffing, and accurate billing. Therapute's centralized database gives you access to one, some, or all facilities' data and the ability to generate real-time reports that compare and consolidate information.

Paperless Clinical Charting

Eliminate handwriting and filing and make information available in real time to staff and management with Therapute. Use its clinical documentation features for certifications/recertifications, addendums, discharge summaries, as well as daily, weekly, and progress notes. By developing a variety of templates for forms and documentation, Therapute gives clients choices in implementing a system that matches their standards of care and that puts staff at ease.

Executive Dashboards

Have you already thought about the key indicators you'd like to have in your dashboard? Possibilities include projected income, revenue by payor type, labor and benefits by discipline, productivity statistics, RUGs summary, RUG/minutes variance, contract labor by time period, and budget with variance.

Your dashboard starts with the top level of information for a quick update. Drill down as far as you need for a detailed view. The data can be displayed by one, some or all facilities, and by type such as SNF, hospital, and outpatient.

Integrated with Keane NetSolutions

Therapute, LLC, has contracted with Keane Care to provide Therapute to Keane NetSolutions clients. As part of this agreement Keane Care has built and is developing interfaces to export claim files from Therapute to Keane Care billing software, import resident demographic data from Keane NetSolutions, and in the future, export responses for the MDS.



About Therapute

Founded in January 2000 in Macon, Georgia, Therapute, LLC is a recognized industry leader in providing real-time, centralized database applications for contract therapy companies and in-house therapy programs in long term care, serving 800 facilities nationwide.

System Information

Therapute software is licensed for a flat monthly fee. It is Web-enabled and runs over a Virtual Private Network. Accessed through icons on your desktop, the software is loaded on Therapute servers located in their HIPAA-compliant datacenter.

As a hosted system, Therapute IT staff maintain your database and keep it current with ICD-9 codes, CPT codes, fee screen rates, CCI and LCD edit updates, as well as software enhancements and new reports.

Optimum RUG and ARD at a glance

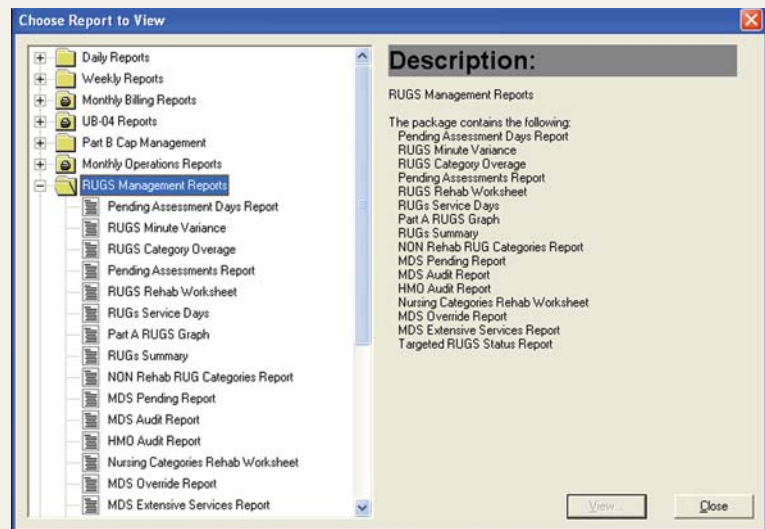
Nursing Center103> CECILE CECILE																			
Plan: 11-12-2008																			
Plan Day	1	2	3	4	5	6	7	8	9	10	11	12	13	14	15	16	17	18	
Date	11-12	11-13	11-14	11-15	11-16	11-17	11-18	11-19	11-20	11-21	11-22	11-23	11-24	11-25	11-26	11-27	11-28	11-29	
Week Day	Wed	Thu	Fri	Sat	Sun	Mon	Tue	Wed	Thu	Fri	Sat	Sun	Mon	Tue	Wed	Thu	Fri	Sat	
Ext. Service Y/N	Y	Y	Y	Y	Y	Y	Y	Y	Y	Y	Y	Y	N	N	N	N	N	N	
ADL's	15	15	15	15	15	15	15	15	18	18	18	18	18	18	18	18	18	18	
PT Plan	60	60	65			60	60	30	60	60			60	60			60	60	
Actual			45	65		60	60	60	60	50			20	50	50			60	60
Variance			(15)					30	(10)				(40)	(10)	50	(60)	(60)		
OT Plan	60	60	60			60	60	30	60	60			60	60	60	60	60	60	60
Actual	55	55	65			65	60	65	60	50			50	50	50			60	60
Variance	(60)	(5)	(5)			65	5	30	(10)	(60)			(10)	(10)	(10)	(60)	(60)		
SLP Plan	30	30	30			30	30	30	30	30			30	30	30	30	30	30	30
Actual	60	60	60			60	70	50	40	30			30	30	45	60			
Variance	30	30	30			30	40	20	10				30	15	30	(30)	(30)		
Total Plan	90	90	150	65		150	150	90	150	150			150	150	90	150	150	150	150
Actual	60	115	160	65	65	180	195	170	150	80			30	100	145	160	60		
Variance	(30)	25	10			65	30	45	80	(70)			30	(50)	(5)	70	(150)	(90)	
7-Day Plan Minutes	90	180	330	395	395	545	695	695	755	755	690	690	690	690	690	690	690	690	690
Actual Minutes	60	175	335	400	465	645	840	950	985	905	840	805	725	675	665	515	495	495	495
Variance	(30)	(5)	(5)	5	70	100	145	255	230	150	150	115	35	(15)	(25)	(175)	(195)	(195)	(195)
7-Day Visit PT			1	2	2	3	4	5	6	6	5	5	5	5	4	4	4	4	4
Visit OT	1	2	3	3	3	4	5	5	5	5	5	5	5	5	5	5	5	5	5
Visit SLP	1	2	3	3	3	4	5	5	5	5	5	5	5	5	5	5	5	5	5
RUGS from Plan	N	RLX	RMX	RMX	RMX	RMX	RVL	RVL	RUX	RUX	RUX	RUX	RVC	RVC	RVC	RVC	RVC	RVC	RVC
RUGS from Actual	N	RLX	RMX	RMX	RMX	RMX	RUL	RUL	RUX	RUX	RUX	RUX	RUC	RVC	RVC	RVC	RVC	RVC	RMC

RUG Assessment Goal		Actual Assessments	
5 Day	<input checked="" type="checkbox"/> 11/18/2008	ULTRA HIGH	11/18/2008 RUB
14 Day	<input checked="" type="checkbox"/> 11/24/2008	ULTRA HIGH	11/24/2008 RUA
30 Day	<input checked="" type="checkbox"/> 12/09/2008	ULTRA HIGH	12/09/2008 RUA
60 Day	<input checked="" type="checkbox"/> 01/09/2009	ULTRA HIGH	01/09/2009 Pending

Ensure the optimum RUG-III score and Assessment Reference Date (ARD) with this Therapute page. Click the Rules box to see RUG criteria.

The optimum ARD is highlighted at top. The row below, labeled Ext Services Y/N, shows whether criteria for the RUG-III Extensive Services category were met. The actual minutes of therapy delivered by discipline are shown in the grid as well as any variance from the planned minutes.

200+ reports at your fingertips



Select a folder from the above page for a list of its on-demand reports. Hover your mouse over a report title for a description of its contents. Both the reports and report menu can be customized.